

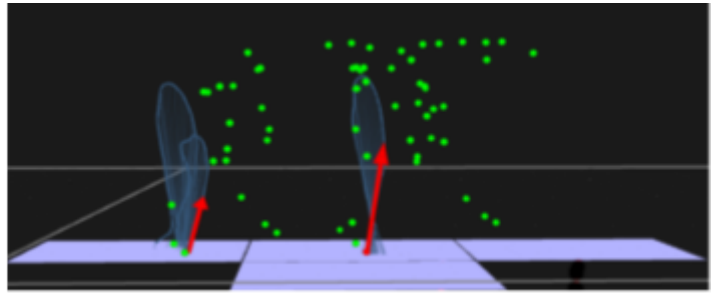
Comparing Movement in Greyhounds Recovering from Corn Surgery to Normal Healthy Movement

Study participants needed!

What is this study about?

Corns are a painful, unnatural thickening in the paw pads. It is a common cause of severe lameness in sighthound breeds (Greyhounds, Whippets and Lurchers). Whilst numerous treatments are available, none are effective long-term. Recently, a new technique has been developed to remove pressure from the affected toe by cutting out a small portion of the toe's tendon, hopefully leading to disappearance of the corn lesion.

We are recruiting dogs to take part in a study that will help determine how this treatment impacts on how the dog walks, both immediately after the surgery and in the longer-term.



What does it involve?

Dogs will be asked to perform walking trials in our purpose-built biomechanics lab at the University of Liverpool main campus in Liverpool. We will measure the motion of their joints using skin markers, sensors, cameras and x-ray methods. We will also conduct a brief clinical examination, take pictures of their feet and ask the owner to complete a short questionnaire about the dog's age, sex, general health, exercise and lameness.

Who can take part?

Greyhounds with corns in one or both front feet that are having a tendonectomy surgery to treat the corns. The dogs must have no additional signs of health problems that affect their movement and they need to be at least 2 years old but younger than 7 years old. They should also be happy to be handled and do some basic tasks: standing still, and walking and trotting in a straight line.